

ICOSLG Antibody (C-term)
Affinity Purified Rabbit Polyclonal Antibody (Pab)
Catalog # AP14872b**Specification**

ICOSLG Antibody (C-term) - Product Information

Application	WB,E
Primary Accession	O75144
Other Accession	NP_056074.1
Reactivity	Human
Host	Rabbit
Clonality	Polyclonal
Isotype	Rabbit IgG
Calculated MW	33349
Antigen Region	217-246

ICOSLG Antibody (C-term) - Additional Information**Gene ID** 23308**Other Names**

ICOS ligand, B7 homolog 2, B7-H2, B7-like protein GI50, B7-related protein 1, B7RP-1, CD275, ICOSLG, B7H2, B7RP1, ICOSL, KIAA0653

Target/Specificity

This ICOSLG antibody is generated from rabbits immunized with a KLH conjugated synthetic peptide between 217-246 amino acids from the C-terminal region of human ICOSLG.

Dilution

WB~~1:1000

E~~Use at an assay dependent concentration.

Format

Purified polyclonal antibody supplied in PBS with 0.09% (W/V) sodium azide. This antibody is purified through a protein A column, followed by peptide affinity purification.

Storage

Maintain refrigerated at 2-8°C for up to 2 weeks. For long term storage store at -20°C in small aliquots to prevent freeze-thaw cycles.

Precautions

ICOSLG Antibody (C-term) is for research use only and not for use in diagnostic or therapeutic procedures.

ICOSLG Antibody (C-term) - Protein Information**Name** ICOSLG

Function Ligand for the T-cell-specific cell surface receptor ICOS. Acts as a costimulatory signal for T-cell proliferation and cytokine secretion (PubMed:[11007762](#), PubMed:[11023515](#), PubMed:[30498080](#)). Also induces B-cell proliferation and differentiation into plasma cells. Could play an important role in mediating local tissue responses to inflammatory conditions, as well as in modulating the secondary immune response by co-stimulating memory T-cell function (By similarity). In endothelial cells, required for proper neutrophil transmigration in response to chemoattractants, such as CXCL8/IL8 or N-formyl-methionyl peptides (fMLP) (PubMed:[30498080](#)).

Cellular Location

Cell membrane; Single-pass type I membrane protein

Tissue Location

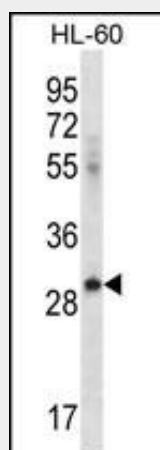
Expressed on peripheral blood B-cells and monocytes, as well as on monocyte-derived dendritic cells (at protein level). [Isoform 2]: Detected only in lymph nodes, leukocytes and spleen. Expressed on activated monocytes and dendritic cells.

ICOSLG Antibody (C-term) - Protocols

Provided below are standard protocols that you may find useful for product applications.

- [Western Blot](#)
- [Blocking Peptides](#)
- [Dot Blot](#)
- [Immunohistochemistry](#)
- [Immunofluorescence](#)
- [Immunoprecipitation](#)
- [Flow Cytometry](#)
- [Cell Culture](#)

ICOSLG Antibody (C-term) - Images



ICOSLG Antibody (C-term) (Cat. #AP14872b) western blot analysis in HL-60 cell line lysates (35ug/lane). This demonstrates the ICOSLG antibody detected the ICOSLG protein (arrow).

ICOSLG Antibody (C-term) - Background

Ligand for the T-cell-specific cell surface receptor ICOS. Acts as a costimulatory signal for T-cell proliferation and cytokine secretion; induces also B-cell proliferation and differentiation into plasma cells. Could play an important role in mediating local tissue responses to inflammatory conditions, as well as in modulating the secondary immune response by co-stimulating memory T-cell function

(By similarity).

ICOSLG Antibody (C-term) - References

Shimada, M., et al. Hum. Genet. 128(4):433-441(2010)
Bailey, S.D., et al. Diabetes Care 33(10):2250-2253(2010)
Wang, K., et al. Hum. Mol. Genet. 19(10):2059-2067(2010)
Pan, F., et al. Immunogenetics 62(4):237-251(2010)
Dubois, P.C., et al. Nat. Genet. 42(4):295-302(2010)